

Welcome to

Joy Total Home Care

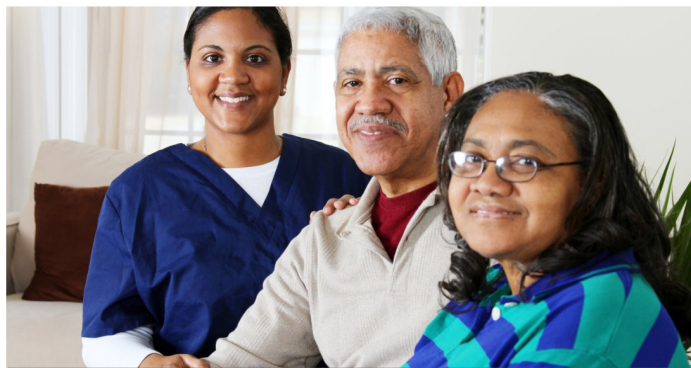
For Family, Only the Best Will Do

Joy Total Home Care offers uncompromising services at the most affordable rates. We are committed to helping you achieve your TOTAL wellness and health. We are here to serve you whether you are looking for a Home Care Registry (independent contractors) or a Home Care Agency. We are licensed to provide both services.



Here at Joy Total Home Care, we understand how we want to provide nothing but the best level of services for your recovering or aging loved ones. That is why we bring to you patient-focused services at the highest standard in the industry.


Despite our affordability, we make sure that we don't compromise on the quality of our people and on the features of each of our properly designed care plans. You can trust in Joy Total Home Care to provide genuine and total care to you and your loved ones with unwavering passion.





Call us today for a Free In-Home Assessment


Contact Information

We will serve you as long as you are satisfied. There is no long-term contract require to sign up for our services.

 PHILADELPHIA COUNTY
1650 Market Street, Suite 3600
Philadelphia, PA 19103

 Office: (215) 496-9202 | Fax: (215) 494-0102
Email: Philly@joytotalhomecare.com

 DELAWARE COUNTY
225 Wilmington-West Chester Pike, Suite 200
Chadds Ford, Pennsylvania 19317

 Office: (484) 816-3118 | Fax: (484) 816-3757
Email: wecare@joytotalhomecare.com

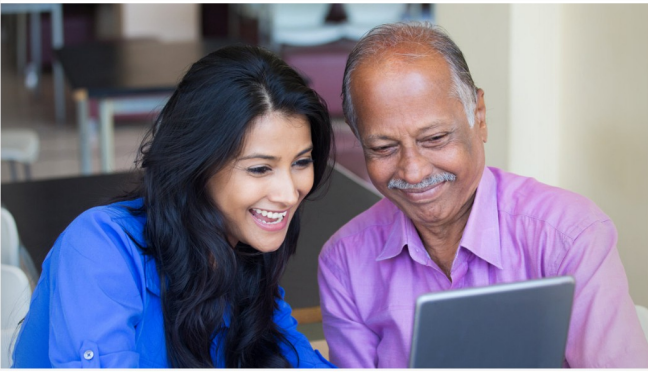
 Website: www.joytotalhomecare.com
Office Hours: M-F 8:30 am - 4:30 pm

We welcome your questions.
Send us a message.



Joy Total Home Care, LLC
We Care

www.joytotalhomecare.com



About Us

Joy Total Home Care is a product of the owner's desire to give affordable yet quality services to all patients and family members who are in need of non-medical services in the home, hospital, nursing home, and assisted living. Our list of services are carefully designed to include all essential features that patients may need at no additional charges or rates.

We are being run by local owner, managers, care providers, and staff who are all dedicated to delivering our mission of patient-focused care to anyone at anytime. We are uncompromising in the level of our services and in the integrity that we have established in this industry.

Should you need to know more about the different services that we offer, don't hesitate to call us today at (484) 816-3118 or (215) 496-9202 for more details and schedule a free assessment with us at your earliest convenience.

OUR MISSION STATEMENT

Joy Total Home Care is a home care provider dedicated to delivering passionate care, incomparable service, and affordable packages to patients who are in need of diligent supervision, and sympathetic assistance in the ease and comforts of their homes. We make patient-focused care possible through no less than the most skilled and qualified care providers and aides that we can provide for our loyal patrons and new customers.

SERVICES



Joy Total Home Care offers uncompromising and best quality services. Do take the time to review our care packages below or feel free to call one of our locations at 484-816-3118 / 215-496-9202 should you have queries or if you need additional information.

Personal Care

Home Support

Companion Care

Alzheimer's and Dementia Care

Trippler Services

Live-In Care

SERVICE AREAS

We are serving the areas of Philadelphia, Delaware, Chester, Bucks, and Montgomery Counties

We accept most insurances such as:
Medicaid Waiver Programs, Long Term Insurance, Private Insurance, Worker's Compensation, VA/Veteran's Aid, and Private Pay.

For specialized needs and concerns, kindly call us at

(484) 816-3118 or
(215) 496-9202

FREE In-Home Assessment



Staff

All of our personnel have been carefully screened, filtered, chosen, and trained in their respective line of work to deliver nothing short of Class A service to our clients and patrons regardless of who they are and the conditions they are in. We carry full insurance coverage that includes Workers Compensation and general liability. We take delight in the team we have formed since the start of our operation and we give due credit to them for helping us win the trust of our clients through the years.